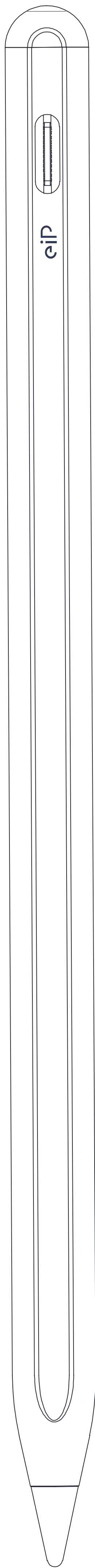
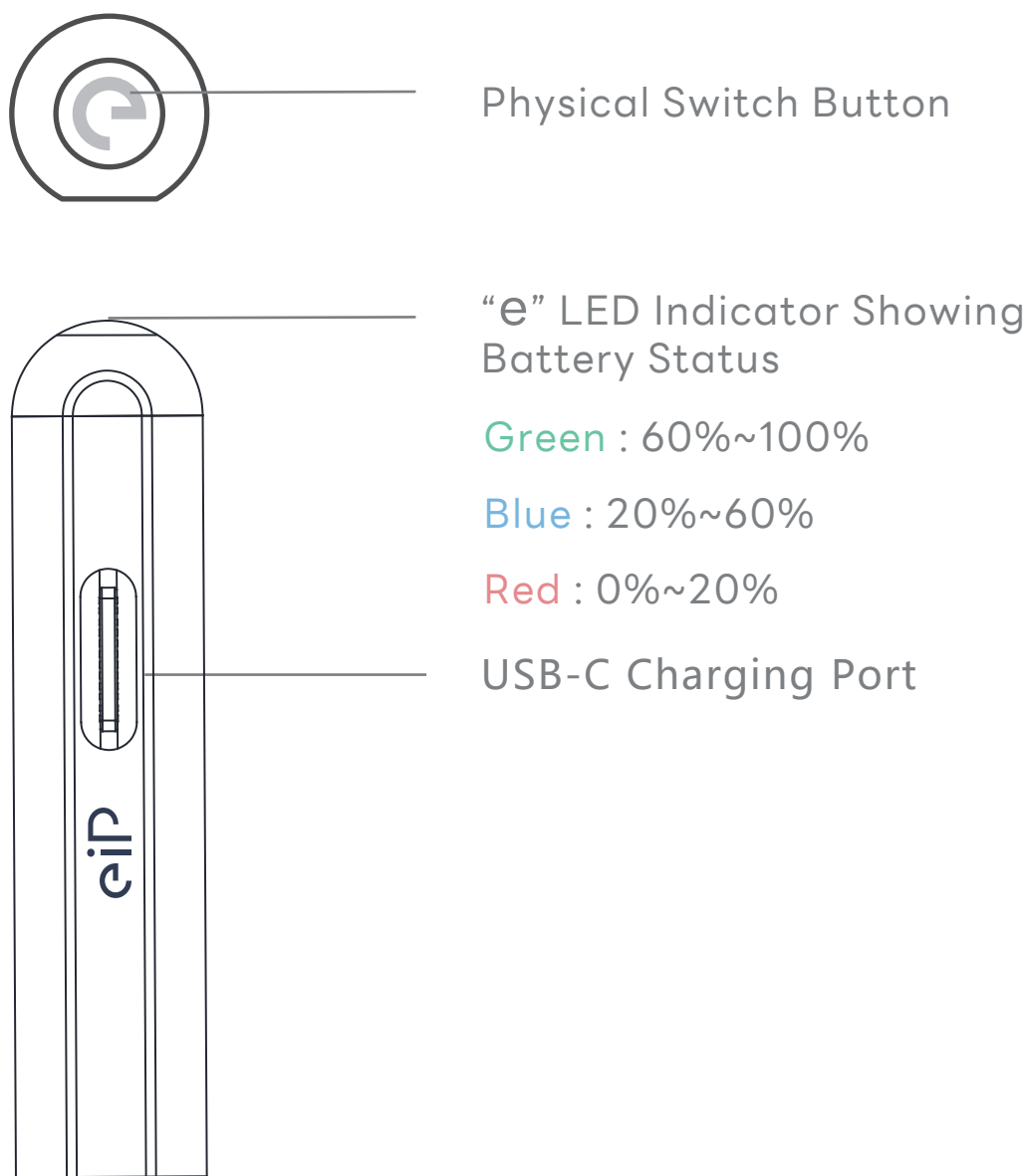


eiP Pencil 2



How to Use

Power: Press Once to Turn On / Off



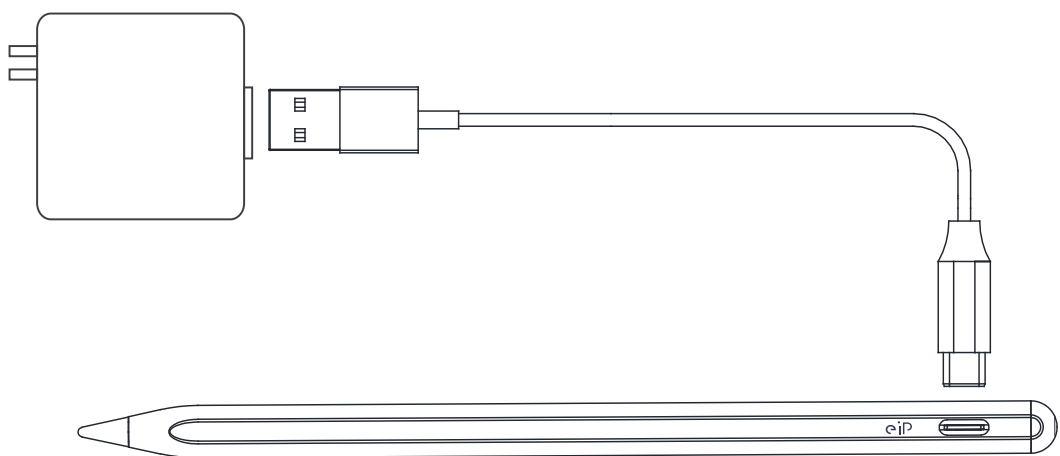
Bluetooth Connection

No Bluetooth Required !!!
It doesn't need bluetooth connection, just click the tail and start to use it.

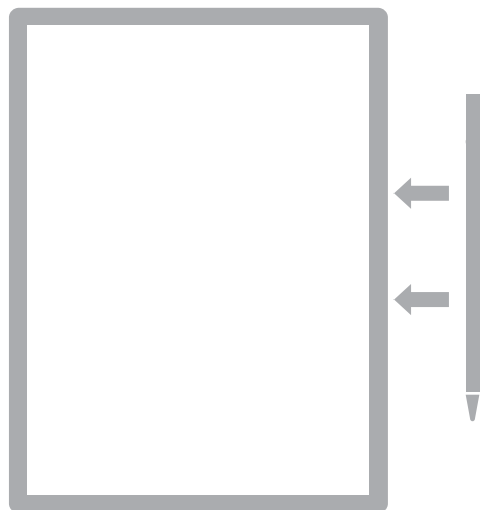
But, if you have paired with original Apple Pencil, you need to unpair it before using eiP Pencil 2.

Charging Method

Connect the USB-C Cable to the USB Charger



Magnetic Storage

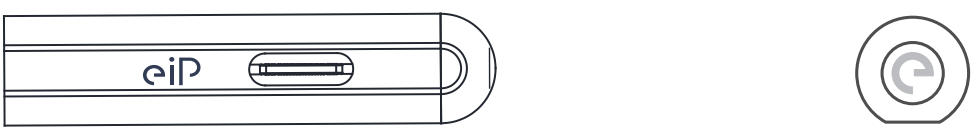


Magnetic Attachment Supported Models

- For iPad Pro 13-inch (M4)
- For iPad Air 13-inch (M2)
- For iPad Pro 12.9-inch
- For iPad Pro 11-inch (M4)
- For iPad Air 11-inch (M2)
- For iPad Air 4 / Air 5
- For iPad mini 6
- For iPad 10th

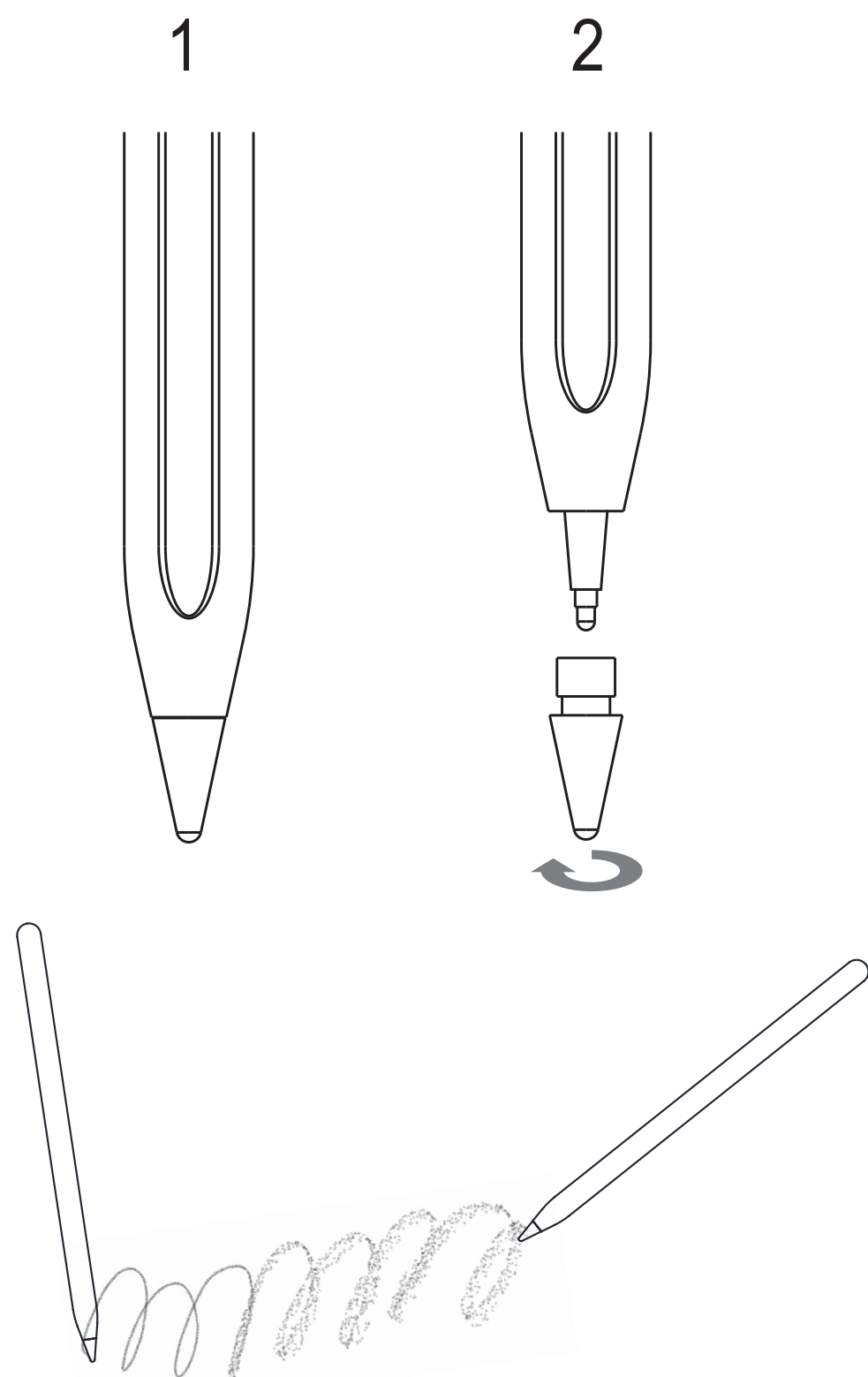
Indicator Light Explanation

When fully charged, the green light stays on , turns off after 10 seconds



How to Replace the Spare Nib

As shown in the figure, remove the nib and replace it with a new one



Tilt Angle Adjustment

*Please switch to Pencil / Brush / Highlighter to enable tilt function.

Compatible List

- iPad Pro 13-inch (M4)
- iPad Air 13-inch (M2)
- iPad Pro 12.9-inch (3rd & 4th & 5th & 6th)
- iPad Pro 11-inch (1st & 2nd & 3rd & 4th)
- iPad Pro 11-inch (M4)
- iPad Air 11-inch (M2)
- iPad Air (3rd & 4th & 5th)
- iPad (6th & 7th & 8th & 9th & 10th)
- iPad mini (5th & 6th)

Note

Only for iPad series after 2018
Apple iPad / iPad Pro / iPad Air / iPad mini

Not support
iPhone / Android / Microsoft
Or an iPad version released before 2018

Package Contents

- eiP Pencil 2 -----x1
- USB-C Charging Cable-----x1
- Replaceable tip -----x1
- Manual QR Code-----x1



Product Specifications

Model	eiP Pencil 2
Dimensions	165x8.9mm
Battery	150mAh
Charging Method	USB-C Cable
Charging Time	27 Mins
Working Time	15Hrs
Tip Size	1.2mm
Power Saving Mode, Auto sleep for idling after 5 mins	

Reminder

Please unpair your apple pencil before using eiP Pencil 2.